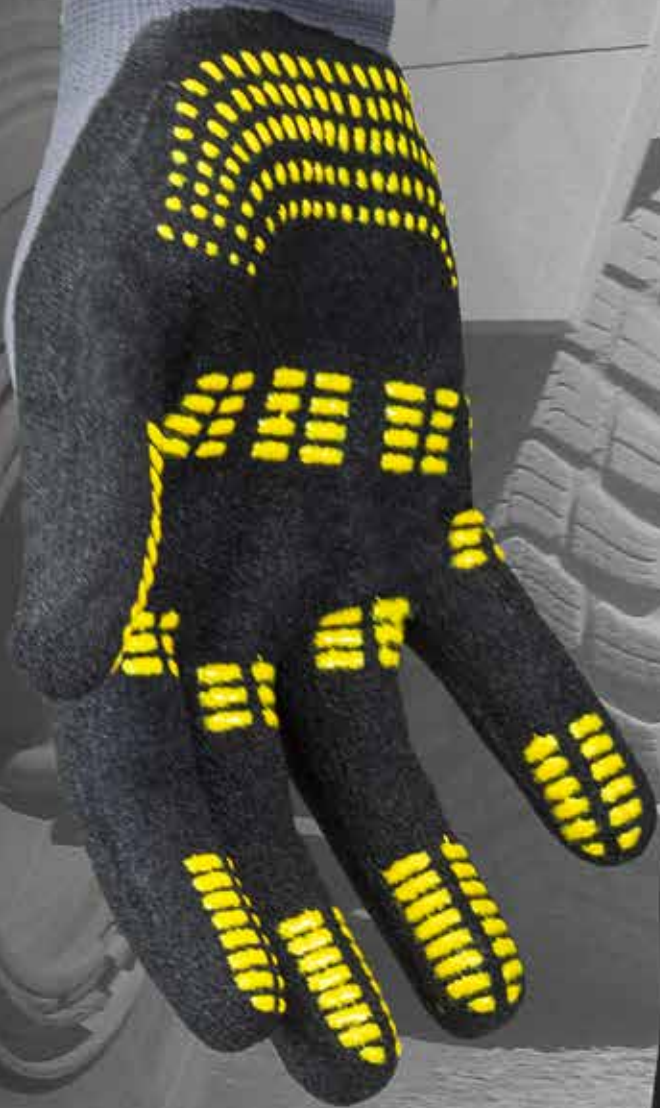




WORK GLOVES



SIZES IDENTIFICATOR



TABLE OF CONTENTS

KNIT GLOVES	P. 8-10
LEATHER GLOVES	P. 11-15
SYNTHETIC LEATHER GLOVES	P. 15
LINED COW GRAIN LEATHER GLOVES	P. 16-19
LINED COW SPLIT LEATHER GLOVES	P. 19-20
LINED SYNTHETIC LEATHER GLOVES	P. 20-21
POLYURETHANE COATED GLOVES	P. 21
LATEX COATED GLOVES	P. 22-23
NITRILE COATED GLOVES	P. 23-25
THERMAL LATEX COATED GLOVES	P. 25
THERMAL NITRILE COATED GLOVES	P. 26
WOVEN NITRILE COATED GLOVES	P. 27
PVC COATED GLOVES	P. 27-28
PVC AND NITRILE COATED GLOVES	P. 29
LINED PVC COATED GLOVES	P. 29-30
LINED PVC AND NITRILE COATED GLOVES	P. 30
MECHANIC GLOVES	P. 31

COATING EXPLANATIONS

	STRENGTHS	WEAKNESSES
Latex	<ul style="list-style-type: none">+ Very flexible+ Very robust+ Very good grip+ Excellent abrasion and tearing resistance	<ul style="list-style-type: none">⊖ Low resistance to oils, greases, hydrocarbons and solvents
Nitrile	<ul style="list-style-type: none">+ Excellent abrasion resistance+ More resistant than latex for puncture+ Excellent resistance to greases, oils, gas, acids and pesticides+ Heat resistance+ Durable	<ul style="list-style-type: none">⊖ Slightly rigid⊖ Low tear resistance⊖ Low chemical resistance
Polyurethane	<ul style="list-style-type: none">+ Very flexible+ Good resistance to abrasion and oils+ Stay flexible under cold temperature+ Porous ventilation helps breathability	<ul style="list-style-type: none">⊖ Low chemical resistance⊖ Poor resistance to hot water
PVC	<ul style="list-style-type: none">+ Functional in winter conditions+ Durable+ Good chemical resistance	<ul style="list-style-type: none">⊖ Low resistance to cut and punctures⊖ Low resistance to solvents

ICONS CHART



**Abrasion
resistant**



**Chemical
resistant**



**Heat
resistant**



**Oil / Gas
resistant**



Waterproof



Winter lined

RESISTANCES



Breathable



Dexterity



Good grip



**High
visibility**



**Touch screen
compatible**

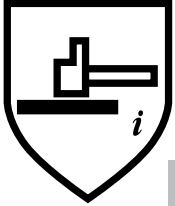


**Very
flexible**

CHARACTERISTICS

INDUSTRY EN STANDARDS

EN 388



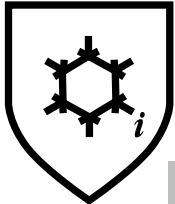
MECHANIC RESISTANCES

4121

RESISTANCES	EXPLANATIONS
Puncture resistance (0 to 4)	The amount of force required to pierce the glove with a standard sized point
Tear resistance (0 to 4)	The amount of force required to tear the glove
Blade cut resistance (0 to 5)	Number of cycles required to cut through the glove at a constant speed
Abrasion resistance (0 to 4)	Number of cycles required to abrade through the glove

Tests	PERFORMANCE LEVELS					
	0	1	2	3	4	5
Puncture resistance (Newton)	< 20	20	60	100	150	-
Tear resistance (Newton)	< 10	10	25	50	75	-
Blade cut resistance (factor)	< 1.2	1.2	2.5	5.0	10.0	20.0
Abrasion resistance (cycles)	< 100	100	500	2000	8000	-

EN 511



PROTECTIONS FROM COLD

111

RESISTANCES	EXPLANATIONS
Permeability to water (0 or 1)	Resistance to water penetration after 30 minutes of exposition
Resistance to cold contact (0 to 4)	Thermal resistance of the glove material in contact with a cold object
Resistance to cold convection (0 to 4)	Thermal insulation property of the glove by the cold convection measurement

Tests	PERFORMANCE LEVELS				
	0	1	2	3	4
Permeability to water	0 Water penetration after 30 min.	1 No water penetration after 30 min.	N/A	N/A	N/A
Resistance to cold contact (higher digit, better insulation)	0	1	2	3	4
Resistance to cold convection (higher digit, better insulation)	0	1	2	3	4



EN 374 PROTECTION FOR CHEMICALS AND MICRO-ORGANISMS

SCOPE

This standard specifies the capability of gloves to protect the user against chemicals and/or micro-organisms.

DEFINITIONS

PENETRATION

The movement of a chemical and/or micro-organism through porous materials, seams, pinholes or other imperfections in a protective glove material at a non-molecular level.

PERMEATION

The rubber and plastic films in gloves do not always act as barriers to liquids. Sometimes they can act as sponges, soaking up the liquids and holding them against the skin. It is therefore necessary to measure breakthrough times, or the time taken for the hazardous liquid to come in contact with the skin.



The 'Chemical resistant' pictogram must be accompanied by a 3-digit code. This code refers to 3 chemicals (from a list of 12 standard defined chemicals) for which a breakthrough time of at least 30 minutes has been obtained.

CODE	CHEMICAL	CAS NUMBER	CLASS
A	Methanol	67-56-1	Primary alcohol
B	Acetone	67-64-1	Ketone
C	Acetonitrile	75-05-8	Nitrile compound
D	Dichloromethane	75-09-2	Chlorinated paraffin
E	Carbone disulphide	75-15-0	Sulphur containing organic compound
F	Toluene	108-88-3	Aromatic hydrocarbon
G	Diethylamine	109-89-7	Amine
H	Tetrahydrofurane	109-99-9	Heterocyclic and ether compound
I	Ethyl acetate	141-78-6	Ether
J	N-Heptane	142-85-5	Saturated hydrocarbon
K	Sodium hydroxide 40%	1310-73-2	Inorganic base
L	Sulphuric acid 96%	7664-93-9	Inorganic mineral acid

Permeation: Each chemical tested is classified in terms of breakthrough time (performance level 0 to 6).

MEASURED BREAKTHROUGH TIME	PROTECTION INDEX	MEASURED BREAKTHROUGH TIME	PROTECTION INDEX
> 10 minutes	Class 1	> 120 minutes	Class 4
> 30 minutes	Class 2	> 240 minutes	Class 5
> 60 minutes	Class 3	> 480 minutes	Class 6



The 'Low Chemical resistant' or 'Waterproof' pictogram is to be used for those gloves that do not achieve a breakthrough time of at least 30 minutes against at least three chemicals from the defined list, but which comply with the Penetration test.



The 'Micro-organism' pictogram is to be used when the glove conforms to at least a performance level 2 for the penetration test.

Warning: The chemical data information does not necessarily reflect the actual duration in the workplace.

KNIT GLOVES

90-301

KNIT GLOVE

100% polyester

550 grams

Approved by Canadian Food Inspection Agency

Available sizes



Resistances / Characteristics



Applications

All purpose - Commercial fishing - Food processing
Construction - Maintenance - Parts handling - Automotive



90-302

KNIT GLOVE

60% polyester / 40% cotton

650 grams

Approved by Canadian Food Inspection Agency

Available sizes



Resistances / Characteristics



Applications

All purpose - Commercial fishing - Food processing
Construction - Maintenance - Parts handling - Automotive



90-304

KNIT GLOVE WITH PVC DOTS

Black PVC dots on the palm

60% polyester / 40% cotton

700 grams

Approved by Canadian Food Inspection Agency

Available sizes



Resistances / Characteristics



Applications

All purpose - Food processing
Construction - Maintenance - Parts handling - Automotive



90-305

YELLOW KNIT GLOVE WITH PVC DOTS

Black PVC dots on the palm

100% polyester

700 grams

Available sizes



Resistances / Characteristics



Applications

All purpose - Forestry / Lumber handling - Farming
Ranching - Construction - Maintenance





90-317

KNIT GLOVE

80% cotton / 20% polyester

800 grams

Available sizes



Resistances / Characteristics



Applications

All purpose - Commercial fishing - Food processing
Construction - Maintenance - Parts handling - Automotive



90-319

KNIT GLOVE

80% cotton / 20% polyester

1000 grams

Available sizes



Resistances / Characteristics



Applications

All purpose - Commercial fishing - Food processing
Construction - Maintenance - Parts handling - Automotive

90-012

LEATHER WORK GLOVE

Three piece palm
 Cow grain leather A-B grade
 Yellow cotton back with blue stripes
 Safety cuff

Available sizes

L XL

Resistances / Characteristics



Applications

All purpose - Forestry / Lumber handling - Farming
 Ranching - Construction - Maintenance



90-030

LEATHER WORK GLOVE

One piece palm
 Cow grain leather A grade
 Yellow cotton back with blue stripes
 Safety cuff

Available sizes

M L XL 2XL

Resistances / Characteristics



Applications

All purpose - Forestry / Lumber handling - Farming
 Ranching - Construction - Maintenance



LEATHER GLOVES

90-033

LEATHER WORK GLOVE

One piece palm
Cow grain leather A-B grade
Green cotton back with yellow and red stripes
Rubberized cuff

Available sizes

L

XL

Resistances / Characteristics



Applications

All purpose - Forestry / Lumber handling - Farming
Ranching - Construction - Maintenance



90-011

LEATHER WORK GLOVE

Three piece palm
Cow split leather A-B grade
Blue cotton back with red and black stripes
Pasted cuff

Available size

L

Resistances / Characteristics



Applications

All purpose - Farming - Construction - Maintenance
Parts handling - Mining - Steel mill



90-013

LEATHER DRIVER GLOVE

One piece palm
Cow grain leather A grade
Elastic at the back of the glove

Available sizes



Resistances / Characteristics



Applications

All purpose - Farming - Ranching - Construction - Truck driving
Forklift driving - Maintenance - Parts handling



90-014

LEATHER DRIVER GLOVE

Goat grain leather A grade
Elastic at the back of the glove

Available sizes



Resistances / Characteristics



Applications

All purpose - Farming - Ranching - Construction - Truck driving
Forklift driving - Maintenance - Parts handling





90-079

LEATHER WORK GLOVE

Three piece palm
Pig grain leather
Yellow cotton back with blue stripes
Safety cuff

Available sizes

L XL

Resistances / Characteristics



Applications

All purpose - Forestry / Lumber handling - Farming
Ranching - Construction - Maintenance



90-080

LEATHER WORK GLOVE

One piece palm
Pig grain leather
Yellow cotton back with blue stripes
Safety cuff

Available sizes

L XL

Resistances / Characteristics



Applications

All purpose - Forestry / Lumber handling - Farming
Ranching - Construction - Maintenance

90-049

LEATHER WORK GLOVE

Three piece palm
Cow grain leather A-B grade
Fluorescent orange back with reflective stripes
Safety cuff

Available sizes

L XL

Resistances / Characteristics



Applications

All purpose - Forestry / Lumber handling - Farming
Ranching - Construction - Maintenance



90-032

SYNTHETIC LEATHER WORK GLOVE

One piece palm
Synthetic leather
6 oz red cotton back
Safety cuff

Available sizes

M L XL 2XL

Resistances / Characteristics



Applications

All purpose - Forestry / Lumber handling - Farming
Ranching - Construction - Maintenance



LINED COW GRAIN LEATHER GLOVES

90-012D

LEATHER WORK GLOVE FLANNEL LINING

Three piece palm
Cow grain leather A-B grade
Yellow cotton back with blue stripes
Safety cuff

Available sizes

L

XL

Resistances / Characteristics



Applications

All purpose - Forestry / Lumber handling - Farming
Ranching - Winter construction - Maintenance



90-012M

LEATHER WORK GLOVE PILE LINING

Three piece palm
Cow grain leather A-B grade
Yellow cotton back with blue stripes
Safety cuff

Available sizes

L

XL

Resistances / Characteristics



Applications

All purpose - Forestry / Lumber handling - Farming
Ranching - Winter construction - Maintenance



LINED COW GRAIN LEATHER GLOVES

90-030D

LEATHER WORK GLOVE FLANNEL LINING

One piece palm
Cow grain leather A grade
Yellow cotton back with blue stripes
Safety cuff

Available sizes

L XL

Resistances / Characteristics



Applications

All purpose - Forestry / Lumber handling - Farming
Ranching - Winter construction - Maintenance



90-030M

LEATHER WORK GLOVE PILE LINING

One piece palm
Cow grain leather A grade
Yellow cotton back with blue stripes
Safety cuff

Available sizes

L XL

Resistances / Characteristics



Applications

All purpose - Forestry / Lumber handling - Farming
Ranching - Winter construction - Maintenance



LINED COW GRAIN LEATHER GLOVES

90-052FT

LEATHER WORK GLOVE FOAM AND THERMAKEEPER LINING

One piece palm
Cow grain leather A grade
Black 100% polyester polar fleece back
Knit elastic cuff

Available sizes

L

XL

Resistances / Characteristics



Applications

All purpose - Forestry / Lumber handling - Farming
Ranching - Winter construction - Maintenance



90-075D

LEATHER WORK GLOVE WITH REFLECTIVE STRIPE FLANNEL LINING

Three piece palm
Cow grain leather A-B grade
Orange polyester back with reflective stripe
Safety cuff

Available sizes

L

XL

Resistances / Characteristics



Applications

All purpose - Forestry / Lumber handling - Farming - Ranching
Road construction - Winter construction - Maintenance



LINED COW GRAIN LEATHER GLOVES

90-075M

LEATHER WORK GLOVE WITH REFLECTIVE STRIPE PILE LINING

Three piece palm
Cow grain leather A-B grade
Orange polyester back with reflective stripe
Safety cuff

Available sizes

L XL

Resistances / Characteristics



Applications

All purpose - Forestry / Lumber handling - Farming - Ranching
Road construction - Winter construction - Maintenance



LINED COW SPLIT LEATHER GLOVES

90-011D

LEATHER WORK GLOVE FLANNEL LINING

Three piece palm
Cow split leather
Blue cotton back with red and black stripes
Pasted cuff

Available size

XL

Resistances / Characteristics



Applications

All purpose - Farming - Winter construction - Maintenance
Parts handling - Mining - Steel mill



LINED COW SPLIT LEATHER GLOVES



90-004M

LEATHER WORK GLOVE PILE LINING

One piece palm
Cow split leather
Yellow cotton back
Safety cuff

Available sizes

L XL

Resistances / Characteristics



Applications

All purpose - Forestry / Lumber handling - Farming
Ranching - Winter construction - Maintenance

LINED SYNTHETIC LEATHER GLOVES



90-032FD

SYNTHETIC LEATHER WORK GLOVE FOAM AND FLANNEL LINING

One piece palm
Synthetic leather
6 oz red cotton back
Safety cuff

Available sizes

L XL

Resistances / Characteristics



Applications

All purpose - Forestry / Lumber handling - Farming
Ranching - Winter construction - Maintenance

LINED SYNTHETIC LEATHER GLOVES

90-032FM

SYNTHETIC LEATHER WORK GLOVE FOAM AND PILE LINING

One piece palm
Synthetic leather
6 oz red cotton back
Safety cuff

Available sizes

L XL

Resistances / Characteristics



Applications

All purpose - Forestry / Lumber handling - Farming
Ranching - Winter construction - Maintenance



POLYURETHANE COATED GLOVES

90-483

POLYURETHANE GLOVE

13 gauge nylon knit
Polyurethane palm, smooth finish
Uncoated knuckles and back for a better dexterity
Elastic cuff

Available sizes

XS S M L XL 2XL

Resistances / Characteristics



Applications

All purpose - Shipping and receiving - Parts handling
Automotive - Electronics - Aerospace



LATEX COATED GLOVES



90-463

LATEX GLOVE

15 gauge polyester knit
Latex palm, porous finish
Double latex dipping
Elastic cuff

Available sizes



Resistances / Characteristics



Applications

All purpose - Commercial fishing - Shipping and receiving
Parts handling - Assembly - Automotive - Inspection

90-440

LATEX GLOVE

10 gauge polyester and cotton knit
Latex palm, wrinkle finish
Uncoated knuckles and back for better dexterity
Elastic cuff

Available sizes



Resistances / Characteristics



Applications

All purpose - Commercial fishing - Construction - Maintenance
Parts handling - Assembly - Windows installation



LATEX COATED GLOVES

90-452

LATEX GLOVE

15 gauge polyester knit
Waffle latex palm
Elastic cuff

Available sizes



Resistances / Characteristics



Applications

All purpose - Commercial fishing - Construction - Maintenance
Parts handling - Assembly - Windows installation



NITRILE COATED GLOVES

90-484

NITRILE GLOVE

13 gauge polyester knit
Nitrile palm, smooth finish
Uncoated knuckles and back for better dexterity
Elastic cuff

Available sizes



Resistances / Characteristics



Applications

All purpose - Manufacturing - Construction
Maintenance - Parts handling - Automotive



NITRILE COATED GLOVES



90-495

NITRILE GLOVE WITH PVC DOTS

15 gauge nylon and spandex knit

Nitrile palm with flat PVC dots, porous finish

Elastic cuff

Available sizes



Resistances / Characteristics



Applications

All purpose - Woodworking - Manufacturing - Construction

Maintenance - Parts handling - Automotive - Windows installation

90-450

NITRILE GLOVE WITH PVC LINES

15 gauge nylon and spandex knit

Nitrile palm with yellow PVC lines, porous finish

Uncoated knuckles and back for better dexterity

Elastic cuff

Available sizes



Resistances / Characteristics



Applications

All purpose - Woodworking - Manufacturing - Construction

Maintenance - Parts handling - Automotive - Windows installation



NITRILE COATED GLOVES

90-485

NITRILE GLOVE

15 gauge nylon knit
Fully coated nitrile glove, porous finish palm
Elastic cuff

Available sizes



Resistances / Characteristics



Applications

All purpose - Commercial fishing - Shipping and receiving
Parts handling - Assembly - Automotive - Inspection



THERMAL LATEX COATED GLOVES

90-441

THERMAL LATEX GLOVE

10 gauge acrylic knit
Latex palm, wrinkle finish
Uncoated knuckles and back for a better dexterity
Elastic cuff

Available sizes



Resistances / Characteristics



Applications

All purpose - Commercial fishing - Manufacturing - Winter construction
Maintenance - Parts handling - Automotive



THERMAL NITRILE COATED GLOVES



90-455

THERMAL NITRILE GLOVE

13 gauge polyester knit
Nitrile palm, smooth finish
Elastic cuff

Available sizes



Resistances / Characteristics



Applications

All purpose - Commercial fishing - Manufacturing - Winter construction
Maintenance - Parts handling - Automotive



90-486

THERMAL NITRILE GLOVE

Outer glove made of 15 gauge orange polyester
Inner made of 7 gauge orange acrylic
Fully coated nitrile, porous finish palm
Elastic cuff

Available sizes



Resistances / Characteristics



Applications

All purpose - Commercial fishing - Winter construction
Shipping and receiving - Parts handling - Inspection - Maintenance

WOVEN NITRILE COATED GLOVES

90-470

NITRILE GLOVE

Interlock lining
Fully coated nitrile, smooth finish
Safety cuff

Available size

XL

Resistances / Characteristics



Applications

All purpose - Commercial fishing - Woodworking
Gardening / Landscaping - Casting - Sheet metal



PVC COATED GLOVES

90-2712

PVC GLOVE

Double dipped PVC, fully coated, rough finish
Jersey lining
12 inches long
Large cuff

Available sizes

M

L

XL

Resistances / Characteristics

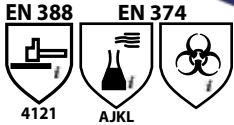


Applications

Commercial fishing - Petrochemical - Chemical industry



PVC COATED GLOVES



90-6612

PVC GLOVE

Triple dipped PVC, fully coated, rough finish

Interlock lining

12 inches long

Available sizes



Resistances / Characteristics



Applications

Commercial fishing - Farming / Ranching - Construction
Maintenance - Petrochemical



90-6628

PVC GLOVE

Triple dipped PVC, fully coated, rough finish

Interlock lining

Heat sealed sleeve with elastic

28 inches long

Available sizes



Resistances / Characteristics



Applications

Commercial fishing - Farming / Ranching - Maintenance - Automotive

PVC AND NITRILE COATED GLOVES

90-2512

PVC AND NITRILE GLOVE

Triple dipped PVC and nitrile, fully coated, rough finish

Interlock lining

12 inches long

Available sizes



Resistances / Characteristics



Applications

Commercial fishing - Construction - Maintenance - Automotive



LINED PVC COATED GLOVES

90-6712

PVC GLOVE FLEECE LINING

Triple dipped PVC, fully coated, rough finish

100% polyester polar fleece liner

12 inches long

Available sizes

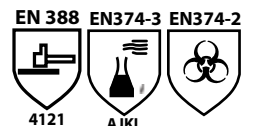


Resistances / Characteristics

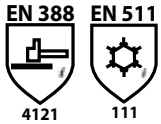


Applications

Farming / Ranching - Commercial fishing - Manufacturing
Cold storage - Winter construction



LINED PVC COATED GLOVES



90-461

PVC GLOVE FOAM AND POLYESTER LINING

Triple dipped PVC, fully coated, rough finish
Foam lining and 100% polyester polar fleece liner
12 inches long

Available sizes



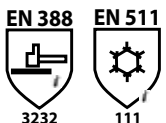
Resistances / Characteristics



Applications

Farming / Ranching - Commercial fishing - Cold storage
Winter construction - Maintenance - Trash collection

LINED PVC AND NITRILE COATED GLOVES



90-2812

PVC AND NITRILE GLOVE ACRYLIC LINING

Triple dipped PVC and nitrile, fully coated, rough finish
100% polyester yellow boa lining
12 inches long

Available sizes



Resistances / Characteristics



Applications

Farming / Ranching - Commercial fishing - Cold storage
Manufacturing - Winter construction

90-658

MECHANIC GLOVE

Microfibre palm
Polyester and spandex back
Padded palm and knuckles
Reinforcement at the thumb and the inside of the hand
Elastic at cuffs

Available sizes



Available colours



Resistances / Characteristics



Applications

All purpose - Construction - Maintenance - Shipping and receiving
Parts handling - Assembly - Automotive



SUMMARY



#90-301
p.8



#90-302
p.8



#90-304
p.9



#90-305
p.9



#90-317
p.10



#90-319
p.10



#90-012
p.11



#90-030
p.11



#90-033
p.12



#90-011
p.12



#90-013
p.13



#90-014
p.13



#90-079
p.14



#90-080
p.14



#90-049
p.15



#90-032
p.15



#90-012D
p.16



#90-012M
p.16



#90-030D
p.17



#90-030M
p.17



#90-052FT
p.18



#90-075D
p.18



#90-075M
p.19



#90-011D
p.19



#90-004M
p.20



#90-032FD
p.20



#90-032FM
p.21



#90-483
p.21



#90-463
p.22



#90-440
p.22



#90-452
p.23



#90-484
p.23

SUMMARY



#90-495
p.24



#90-450
p.24



#90-485
p.25



#90-441
p.25



#90-455
p.26



#90-486
p.26



#90-470
p.27



#90-2712
p.27



#90-6612
p.28



#90-6628
p.28



#90-2512
p.29



#90-6712
p.29



#90-461
p.30



#90-2812
p.30



#90-658
p.31





www.jackfield.ca